

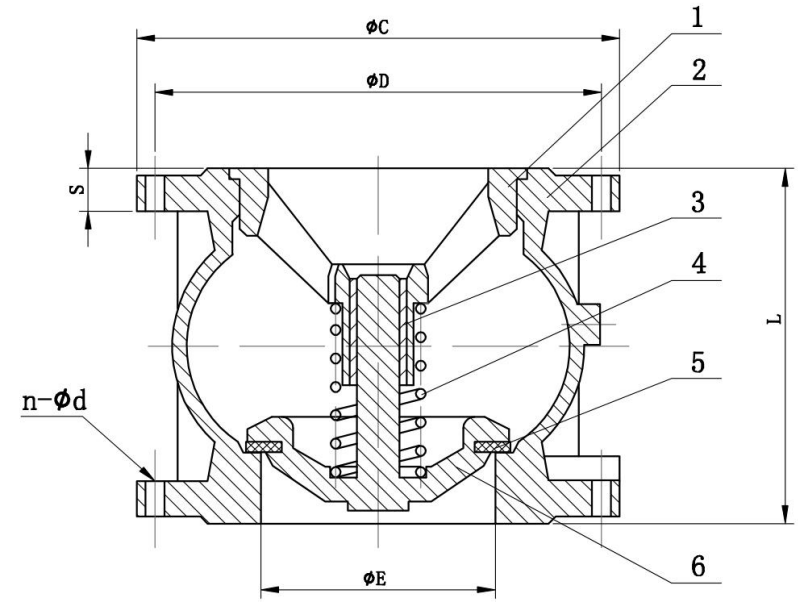
# Flanged Silent Check Valve



## DESCRIPTION

1. Working pressure: 1.0/1.6Mpa
2. Working temperature:  
NBR: 0°C ~ +80°C  
EPDM: -10°C ~ +120°C
3. Flange according to EN1092-2, PN10/16
4. Testing: DIN3230, API598
5. Medium: Fresh Water, Sea water, all kinds of oil, etc.

NO.	Part	Material
1	Guide	GGG40
2	Body	GG25/GGG40
3	Sleeve	PTFE
4	Spring	Stainless steel
5	Seal ring	NBR/EPDM
6	Disc	GGG40/Brass



DN(mm)		50	65	80	100	125	150	200	250	300
L (mm)		100	120	140	170	200	230	301	370	410
$\phi E$ (mm)		50	65	80	101	127	145	194	245	300
$\phi C$ (mm)		165	185	200	220	250	285	340	405	460
$\phi D$ (mm)	PN10	125	145	160	180	210	240	295	350	400
	PN16	125	145	160	180	210	240	295	355	410