

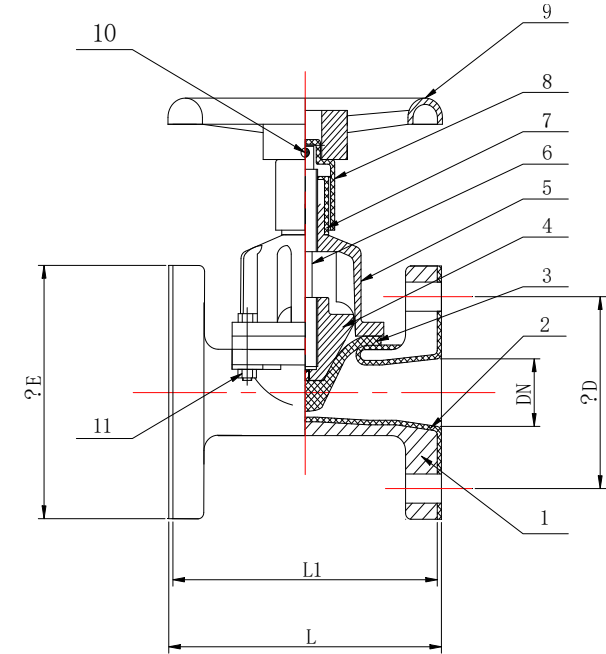
Diaphragm Valve



NO.	Part	Material
1	Body	GG25
2	Lining	NR
3	Diaphragm	NR
4	Disc	GG25
5	Bonnet	GG25
6	Shaft	Steel
7	Sleeve	ABS
8	Sleeve	ABS
9	Handle	GGG40
10	Pin	Steel
11	Bolt	Steel

DESCRIPTION

- Working pressure:
DN50-DN125: 1.0Mpa
DN150-DN200: 0.6Mpa
DN250-DN300: 0.4Mpa
- Working temperature:
NR: -20°C ~ +60°C
- Face to face: EN588-1
- Flange connection according to EN1092-2, BS4504 ect.
- Testing: DIN3230, API598
- Medium: Cement, Clay, Cinder, Granular Fertilizer, Solid fluid, Fresh Water, Sea Water, Inorganic acid and Alkaline Liquid etc.



DN(mm)		50	65	80	100	125	150	200	250	300
L (mm)		194	216	258	309	362	412	527	640	755
L1(mm)		188	222	252	301	354	404	517	630	745
ΦE (mm)		165	185	198	220	250	283	335	395	445
ΦD (mm) (EN1092-2)	PN10	125	145	160	180	210	240	295	350	400
	PN16								355	410